

# Ubiquitous WiFi Printing

## Lexmark X4550 Wireless All-in-One Printer

BY TIMOTHY FERNANDEZ



Out of the box, the X4550 looks like your basic straightforward printer. Basic shiny white with silver accents make it very minimalist, which would probably be good news for iMac owners. The exterior is almost completely constructed out of plastic. A peek at the rear would have you notice a little black antenna connected to a removable WiFi module. While this may sound strange, it's actually more cost effective for Lexmark as some of their other models have WiFi as an optional extra. As the X4550 is meant as a multifunctional 4-in-one it has a flatbed scanner and also a nice array of memory card readers on the side.

The main caveat of having a wallet friendly inkjet multifunctional is usually a sacrifice in speed and quality. Thankfully, the Lexmark doesn't disappoint. Startup was a breeze with us needing only to connect the printer via USB for a five-minute network configuration. In terms of print speed, the X4550 was quite impressive, giving us a full page monochrome text printout in under five seconds in Quick Print mode – Lexmark's equivalent of draft mode for ultra speedy prints. Lexmark ensured theirs had decent color rendition which made our 10 page text with graphics look great. Text on the other hand turned out a tad fuzzy, though this

was only apparent on closer inspection. A full 10 pages of text and graphics took over four minutes though, which isn't anything to brag about. It did however impress us when the X4550 managed to churn out 10 pages of plain text in Normal settings in just over a minute.

The X4550 comes with a decent 4,800 x 1,200 print resolution and this enables it to deliver very impressive photo quality prints. While some lower end printers tend to be noticeably sluggish with full A4 sized photo prints, the X4550 manages a respectable 6 minute and 9 seconds. Although this may seem average, it's at least consistent, delivering even monochrome photographs at almost exactly the same time. Photographs were also suitably saturated and sharp, even with all the in-printer sharpening and saturation turned off. We did have an issue with the color printout displaying hints of ink banding, though this might just be a problem with the cartridge we had.

If speed and guaranteed reliability is of the essence, you'd probably want to stick to a USB2.0 connection. Using our in-house WiFi network, the printer took an extra 6 minutes to begin spooling as compared to good old USB2.0, averaging at about 10 seconds in general.

As scanners go, the X4550 really sets the bar for budget multifunctional printers, giving us a full paged A4 color scan in 30 seconds flat. Even at 600dpi, the scanner managed to clock a very tidy time of just a second over two minutes. Although we did notice a tendency for skin tones to be just a tad oversaturated, we doubt most casual users will mind.

### SPECIFICATIONS

<b>Printer Type</b> Thermal Inkjet	<b>Print Resolution</b> Up to 4800 x 1200 dpi (Color)	<b>Scan Resolution</b> 600 x 1200 dpi (Optical)	<b>Wireless</b> 802.11g	<b>Price</b> RM 549
---------------------------------------	--	--	----------------------------	------------------------

**Print Technology:** Thermal Inkjet  
**Maximum Resolution:** Up to 4800 x 1200 dpi (Color), 1200 x 1200 dpi (Black)  
**Print Speed:** Up to 18ppm (Draft, color) & 26ppm (Draft, black), 6ppm (Normal, color) & 15ppm (Normal, black)  
**Paper Hold Capacity:** 100 sheets (75gsm)  
**Copy Speed:** Up to 17cpm (Draft, black) & 11cpm (Draft, color), 3.5cpm (Normal, black) & 2 cpm (Normal, color)  
**Scan Resolution:** Up to 600 x 1200 dpi (Optical) & 19200 x 19200 dpi (Enhanced)  
**Interface:** USB2.0, Hi-Speed Certified USB pass-through via PictBridge port, 802.11g Wireless  
**Dimensions/Weight:** 177 x 453 x 325 mm / 5.8kg  
**Warranty:** One-year  
**Contact:** Digital Paper Sdn Bhd  
**Telephone:** (03) 5569 2002  
**URL:** www.lexmark.com.my

Available at  
**PLAZA LOW YAT**  
 shopping centre

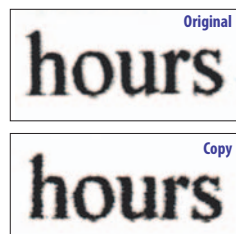
### HWM'S VERDICT

Physique: **7.5**  
 Features: **8.5**  
 Print Speed: **8.0**  
 Print Quality: **7.5**  
 Value: **9.0**

# 8.0

Out of 10

A quick wireless printing solution with a very appealing price tag



The black & white image came off looking very well-defined.

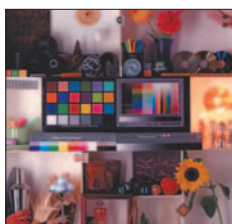


Photo printouts were sharp and saturated but text sharpness leaves room for improvement.

Tests	Timing (Min:Sec)
10 A4 pages of black text (doc) in draft mode	49 sec
10 A4 pages of black text (doc) in normal mode	1 min 1 sec
10 A4 pages of text with color graphics (doc) in draft mode	1 min 8 sec
10 A4 pages of text with color graphics (doc) in normal mode	4 min 9 sec
8 A4 pages of text with monochrome graphics (PDF)	2 min 9 sec
One borderless full-color A4 size (Photo mode)	6 min 09 sec
One borderless grayscale A4 size (Photo mode)	6 min 08 sec

\*For print tasks, timing started when the printer started to feed paper and stopped when the last page was printed. The timings are all approximate. 80gsm A4 paper was used for document printing. Documents were printed with quality set to Normal as well as Quick Print (Draft). For photo printing, Lexmark Premium Photo Paper was used with Paper Type setting left to the printer's sensor. Quality setting was set to Photo. Timings may vary with different system configurations.