

## START HERE

*If you answer “yes” to any of these questions, turn to the section indicated for Setup and Connection instructions.*

Do you want to connect the printer to a wireless network?

Use the **Wireless Setup and Connection.**



Wireless

Do you want to connect the printer directly to the computer?

Use the **USB Setup and Connection.**



USB

Do you want to connect the printer to a wired ethernet network?

Use the **Wired Setup and Connection.**

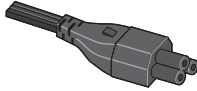

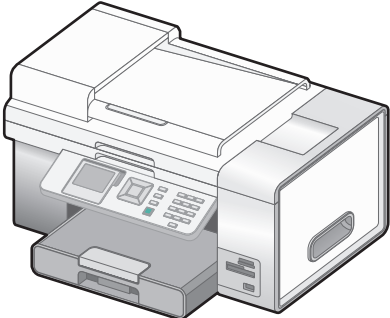


Wired

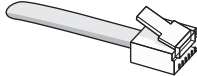


# Wireless Setup and Connection

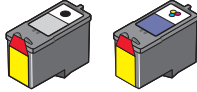
**1** You need the following items to complete Wireless Network Setup:



Power cord



Telephone cord



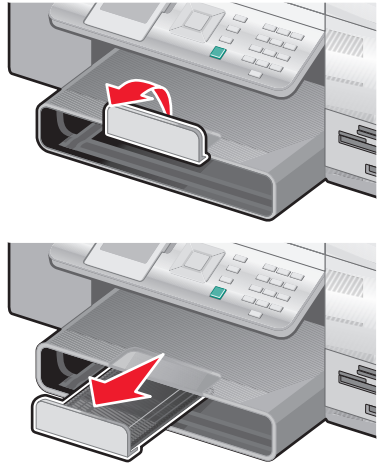
Print cartridges

**2** Move the printer near the computer.

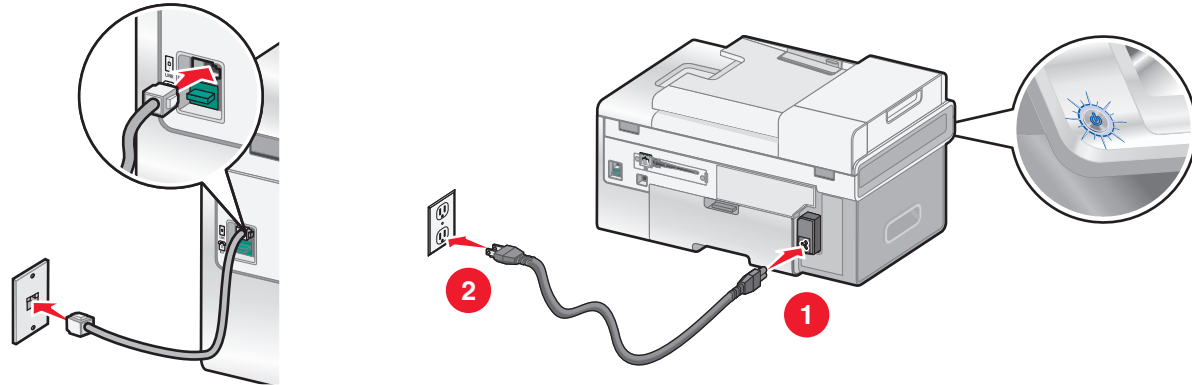
**3** Load paper.



## 4 Adjust the paper exit tray.

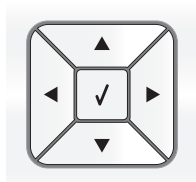
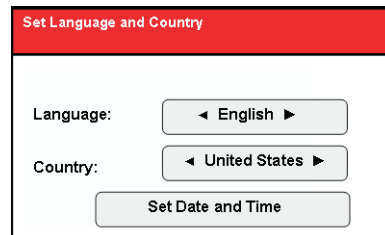


## 5 Connect the telephone cord and power cord.

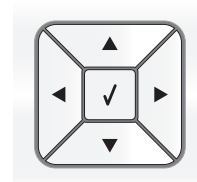
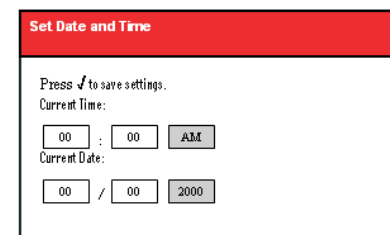


## 6 Adjust the settings.

- 1 Press ◀ or ▶ to select the language.
- 2 Press ▼ to locate the Country setting.
- 3 Press ◀ or ▶ to select the country or region.
- 4 Press ▼ to scroll to **Set Date and Time**, and then press ✓.

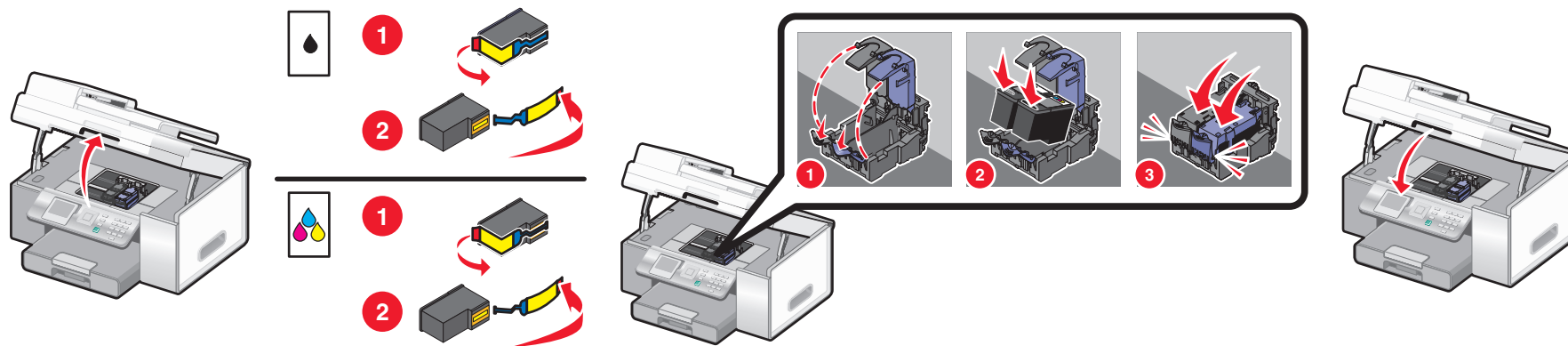


- 1 Use the keypad to enter the time, and use ◀ or ▶ to scroll between hours and minutes.
- 2 Press ◀ or ▶ to scroll to AM, PM, or 24Hr, and use ▲ or ▼ to change the setting.
- 3 Press ◀ or ▶ to scroll to **Current Date**.
- 4 Use the keypad to enter the date, and use ◀ or ▶ to scroll between day, month, and year.
- 5 Press ✓ to save the settings.

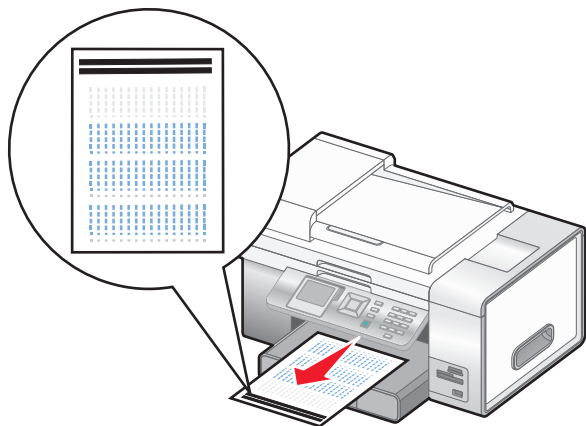




## 7 Insert the print cartridges.



8 The printer automatically aligns the print cartridges and prints an alignment page. This may take a few minutes.



9 Make sure the computer is on.



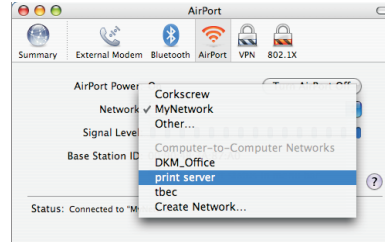
10 From the Applications folder, double-click the **Internet Connect** icon.



**11** From the toolbar, click the **AirPort** icon.



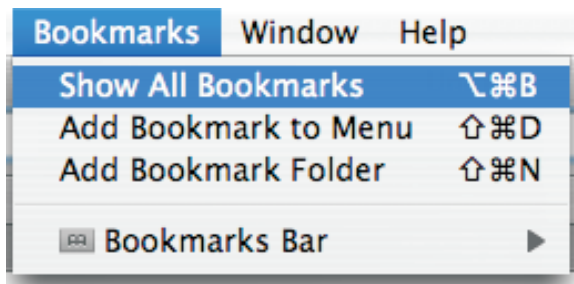
**12** From the Network pop-up menu, select **print server**.



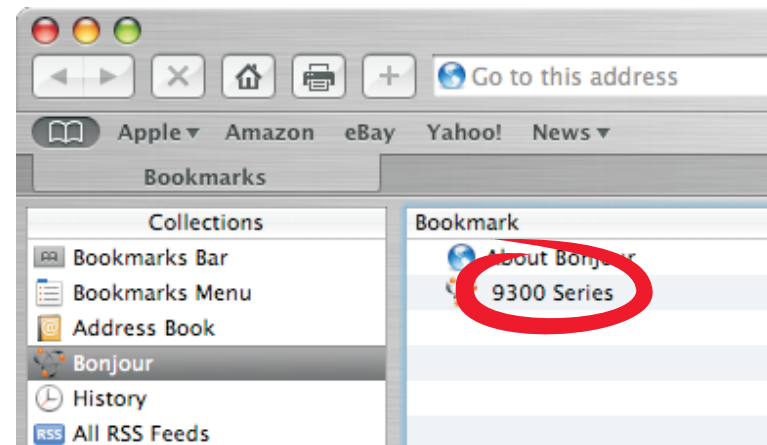
**13** Open the **Safari** browser.



**14** From the Bookmarks drop-down menu, select **Show All Bookmarks**.

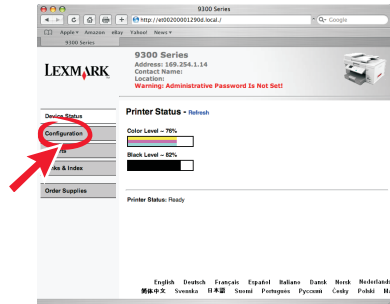


**15** Under Collections, select **Bonjour** or **Rendezvous**, and then double-click **9300 Series**.

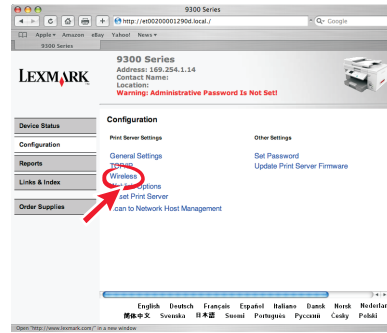




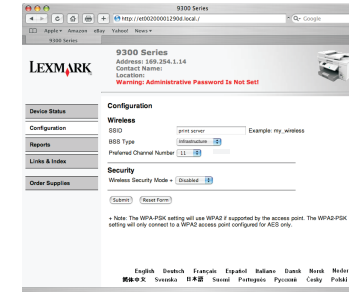
## 16 Click Configuration.



## 17 Click Wireless.

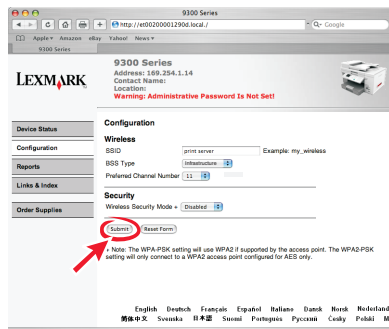


- 1 Enter the name of your network (SSID).
- 2 For BSS Type, select **Infrastructure** if you are using a wireless router.
- 3 Select the type of security you use to protect your wireless network.



**Note:** If you do not know this information, see the documentation that came with the wireless network or contact the person who set up your wireless network.

## 19 Click Submit.



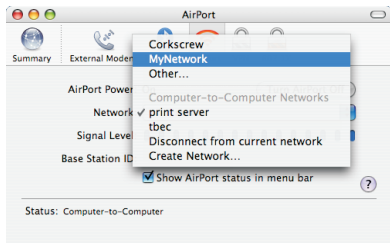
## 20 From the Applications folder, double-click the Internet Connect icon.



## 21 From the toolbar, click the AirPort icon.

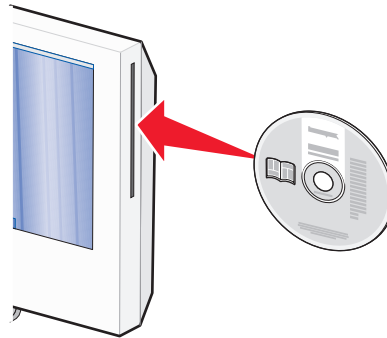


**22** From the Network pop-up menu, select your original network.



**Note:** You may need to enter the password for your wireless network security.

**23** Insert the CD.



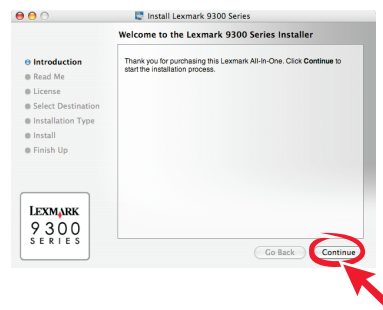
**24** Double-click the **9300 Series Installer** icon on the desktop.



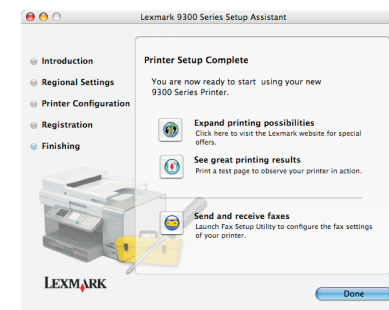
**25** Double-click the **Install** icon.



**26** Click **Continue**.



**27** Follow the instructions on the screen to complete installation.





## Setup troubleshooting

Incorrect language appears on the display.	<ol style="list-style-type: none"> <li>1 Press  to turn the printer off.</li> <li>2 Press  once, and then immediately press and hold  and .</li> <li>3 Release the buttons.</li> <li>4 Press  or  repeatedly until the language you want appears on the display.</li> <li>5 Press  or  repeatedly until the option for Country is highlighted.</li> <li>6 Press  or  repeatedly until the country you want appears on the display.</li> <li>7 Press  or  repeatedly until <b>Set Date and Time</b> is highlighted.</li> <li>8 Press .</li> <li>9 Set the date and time. For more information, see step 6 in the Setup documentation.</li> </ol>
Software does not install.	<ol style="list-style-type: none"> <li>1 Turn off and then restart the computer.</li> <li>2 Insert the CD.</li> <li>3 Double-click the <b>9300 Series Installer</b> icon.</li> <li>4 Double-click the <b>Install</b> icon, and follow the instructions on the screen to complete installation.</li> </ol>
Power button is not lit.	<ol style="list-style-type: none"> <li>1 Disconnect the power cord from the wall outlet, and then from the printer.</li> <li>2 Plug the cord all the way into the power supply on the printer.</li> <li>3 Plug the cord into an electrical outlet that other electrical devices have been using.</li> <li>4 If the  light is not on, press .</li> </ol>

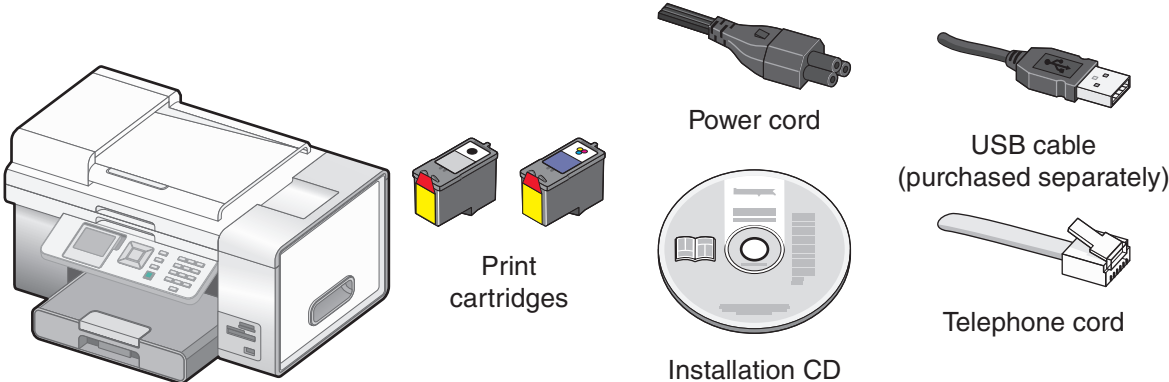
## Networking troubleshooting

Printer is unable to join the network	Make sure the printer settings match those used by the wireless network.
	Make sure the printer is within range of the wireless network.
	If your network uses MAC address filtering, provide the MAC address for the printer to your network.
Printer is configured correctly, but cannot be found on the network.	Make sure that the printer has power and the  light is on. For more help, see "Power button is not lit" in the Setup troubleshooting.
	Make sure the printer is within range of the wireless network.
	Make sure the printer is located away from other electronic devices that may interfere with the wireless signal.
Printer does not appear on the Printer Selection screen.	<ol style="list-style-type: none"> <li>1 From the Printer Selection screen, select <b>Add Remote</b> from the pop-up menu.</li> <li>2 From the Add Remote pane, enter a TCP/IP address to find printers on the network. For more information, see the online Help.</li> </ol>
Network printer does not print.	Make sure all cables to the printer and to the electrical outlet are secure.
	Make sure the network is operating properly.
	Restart the computer.
	Uninstall and then reinstall the software.

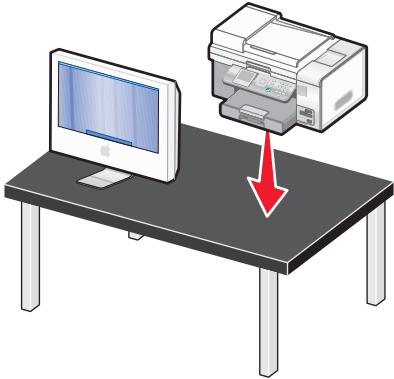


# USB Setup and Connection

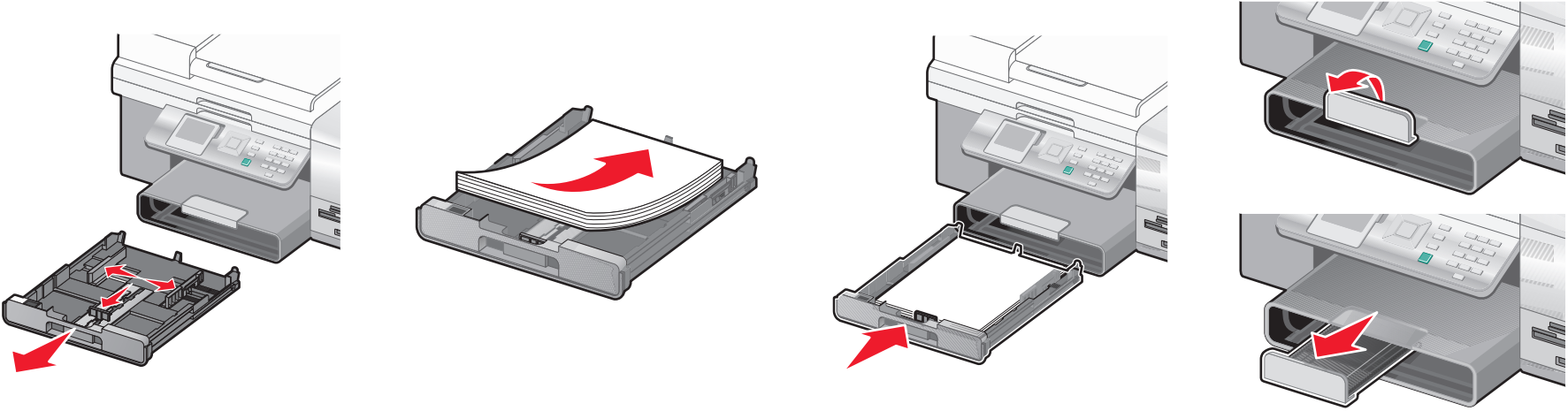
**1** You need the following items to complete USB Setup:



**2** Move the printer near the computer.

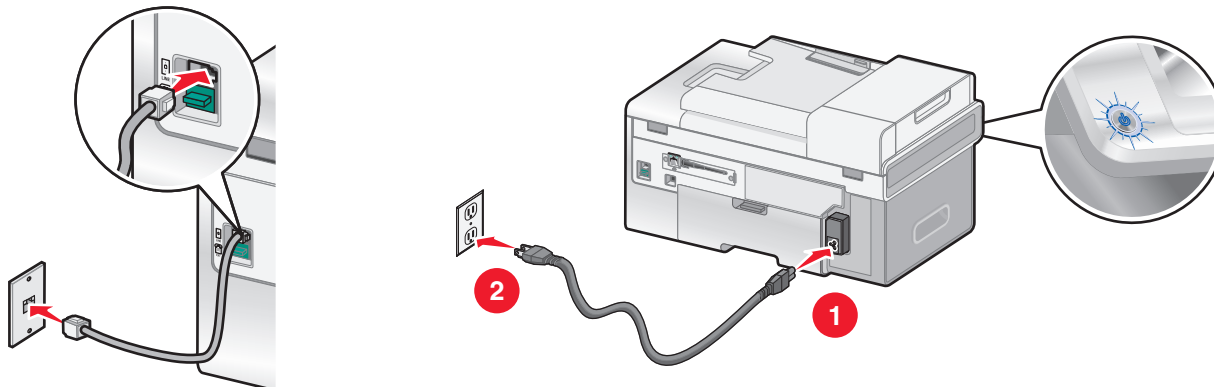


**3** Load paper.



USB

## 4 Connect the telephone cord and power cord.



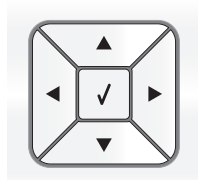
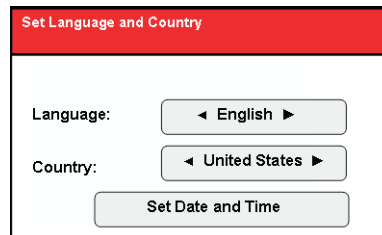
**Important!** Do not connect the USB cable yet.

USB

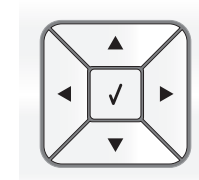
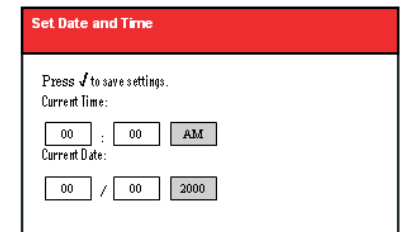


## 5 Adjust the settings.

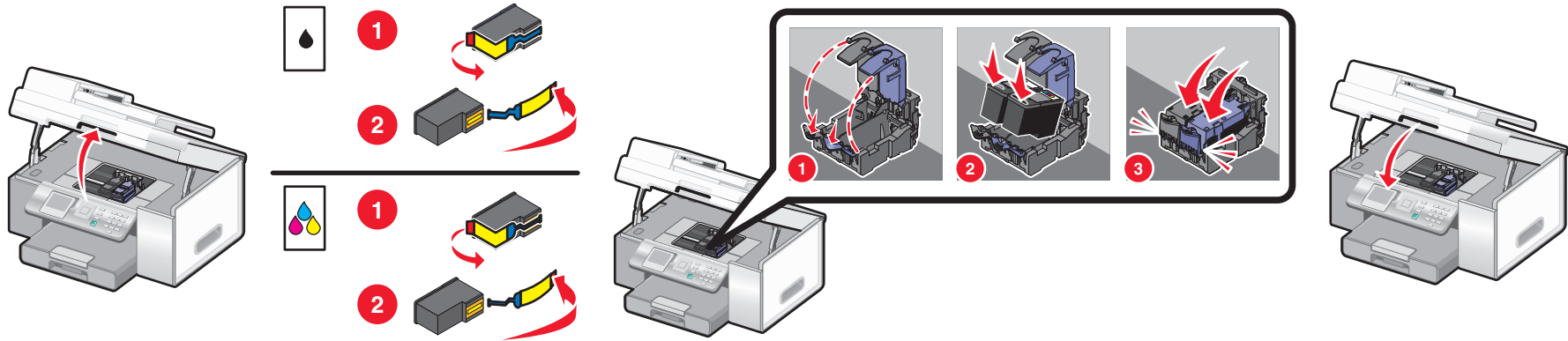
- 1 Press ◀ or ▶ to select the language.
- 2 Press ▼ to locate the Country setting.
- 3 Press ◀ or ▶ to select the country or region.
- 4 Press ▼ to scroll to **Set Date and Time**, and then press ✓.



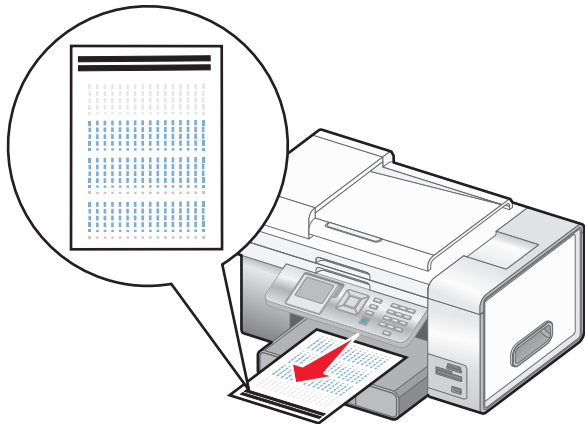
- 1 Use the keypad to enter the time, and use ◀ or ▶ to scroll between hours and minutes.
- 2 Press ◀ or ▶ to scroll to AM, PM, or 24Hr, and use ▲ or ▼ to change the setting.
- 3 Press ◀ or ▶ to scroll to **Current Date**.
- 4 Use the keypad to enter the date, and use ◀ or ▶ to scroll between day, month, and year.
- 5 Press ✓ to save the settings.



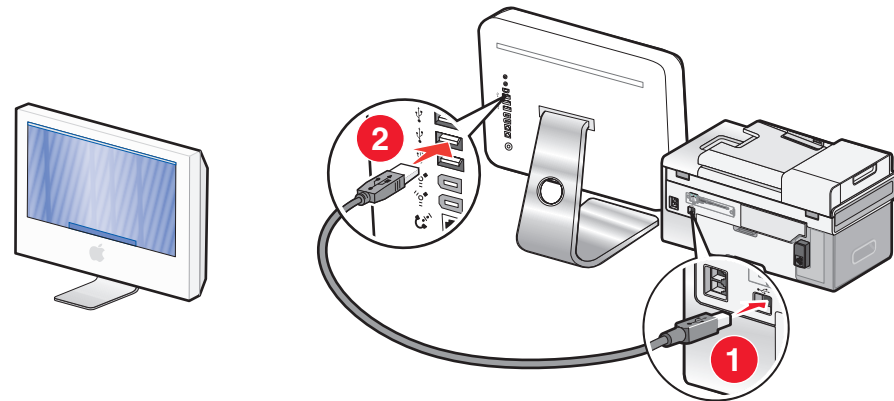
## 6 Insert the print cartridges.



**7** The printer automatically aligns the print cartridges and prints an alignment page. This may take a few minutes.



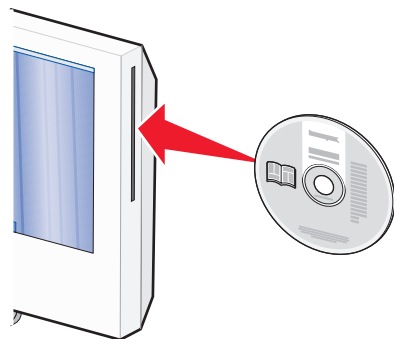
**8** Make sure the computer is on, and then connect the USB cable to the printer and to the computer.



USB



**9** Insert the CD.



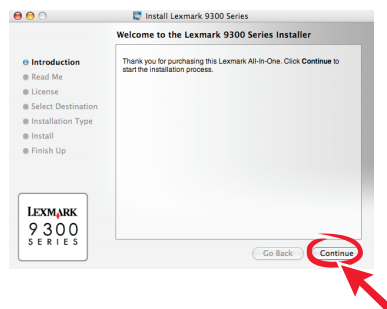
**10** Double-click the **9300 Series Installer** icon on the desktop.



**11** Double-click the **Install** icon.









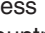

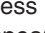

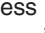




**12** Click **Continue**.



**13** Follow the instructions on the screen to complete installation.



# Setup troubleshooting

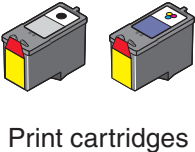
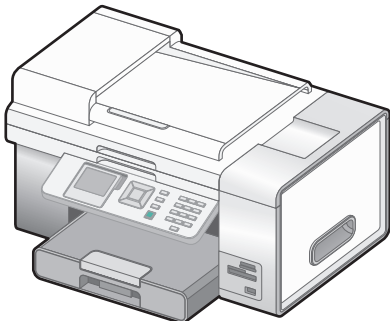
Incorrect language appears on the display.	<ol style="list-style-type: none"><li>1 Press  to turn the printer off.</li><li>2 Press  once, and then immediately press and hold  and .</li><li>3 Release the buttons.</li><li>4 Press  or  repeatedly until the language you want appears on the display.</li><li>5 Press  or  repeatedly until the option for Country is highlighted.</li><li>6 Press  or  repeatedly until the country you want appears on the display.</li><li>7 Press  or  repeatedly until <b>Set Date and Time</b> is highlighted.</li><li>8 Press .</li><li>9 Set the date and time. For more information, see step 5 in the Setup documentation.</li></ol>
Software does not install.	<ol style="list-style-type: none"><li>1 Turn off and then restart the computer.</li><li>2 Insert the CD.</li><li>3 Double-click the <b>9300 Series Installer</b> icon.</li><li>4 Double-click the <b>Install</b> icon, and follow the instructions on the screen to complete installation.</li></ol>
Power button is not lit.	<ol style="list-style-type: none"><li>1 Disconnect the power cord from the wall outlet, and then from the printer.</li><li>2 Plug the cord all the way into the power supply on the printer.</li><li>3 Plug the cord into an electrical outlet that other electrical devices have been using.</li><li>4 If the  light is not on, press .</li></ol>



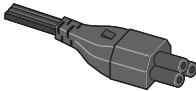
USB

# Wired Setup and Connection

**1** You need the following items to complete Wired Network Setup:



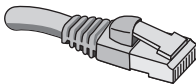
Print cartridges



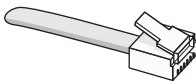
Power cord



Installation CD

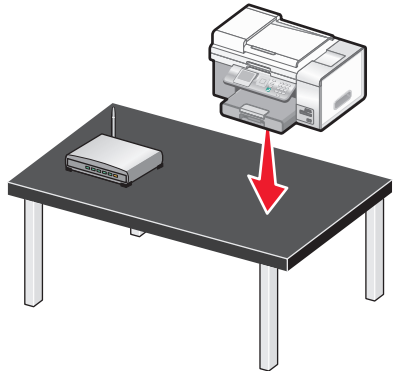


Network cable  
(not included)

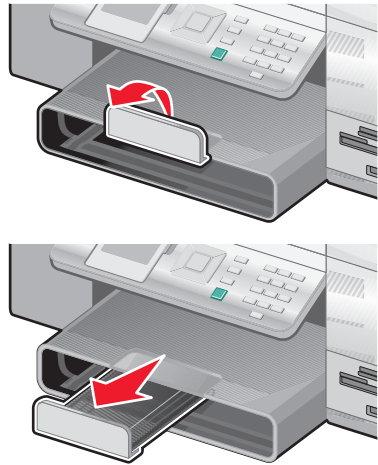
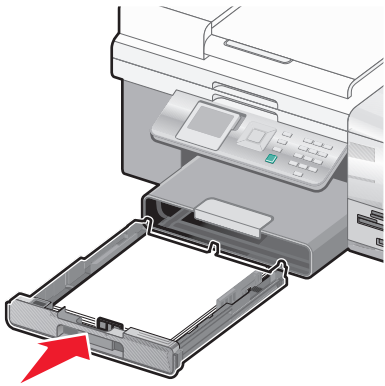
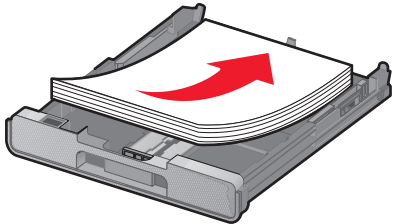
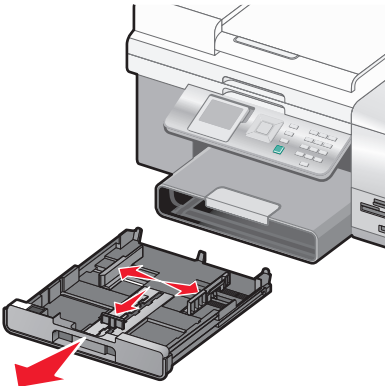


Telephone cord

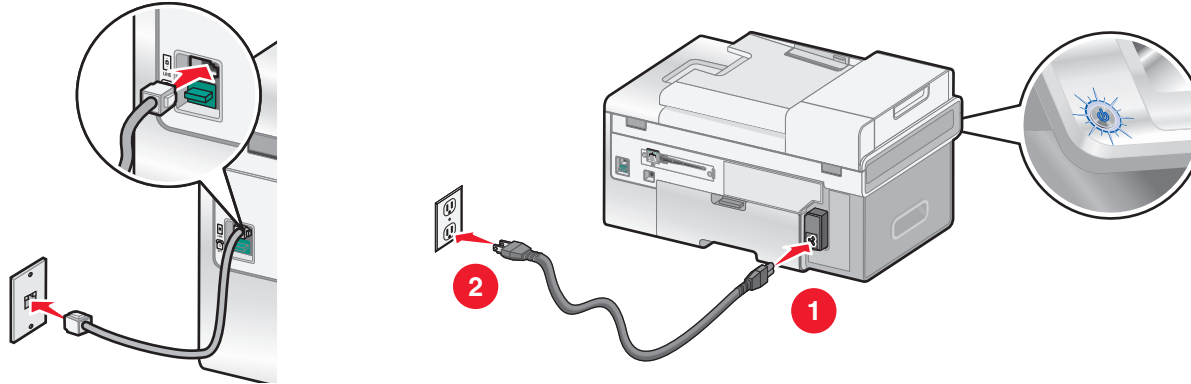
**2** Move the printer near the router.



**3** Load paper.



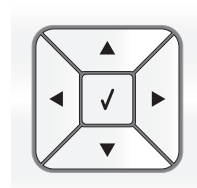
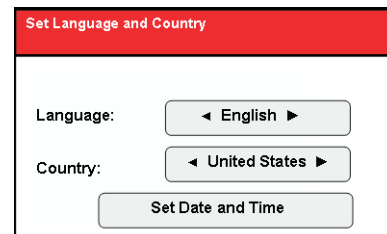
## 4 Connect the telephone cord and power cord.



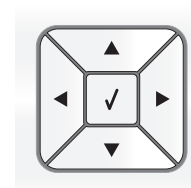
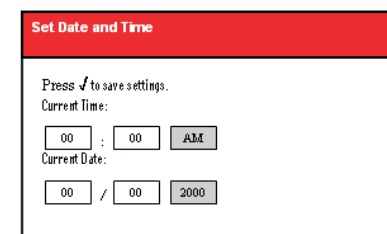
**Important!** Do not connect the Network cable yet.

## 5 Adjust the settings.

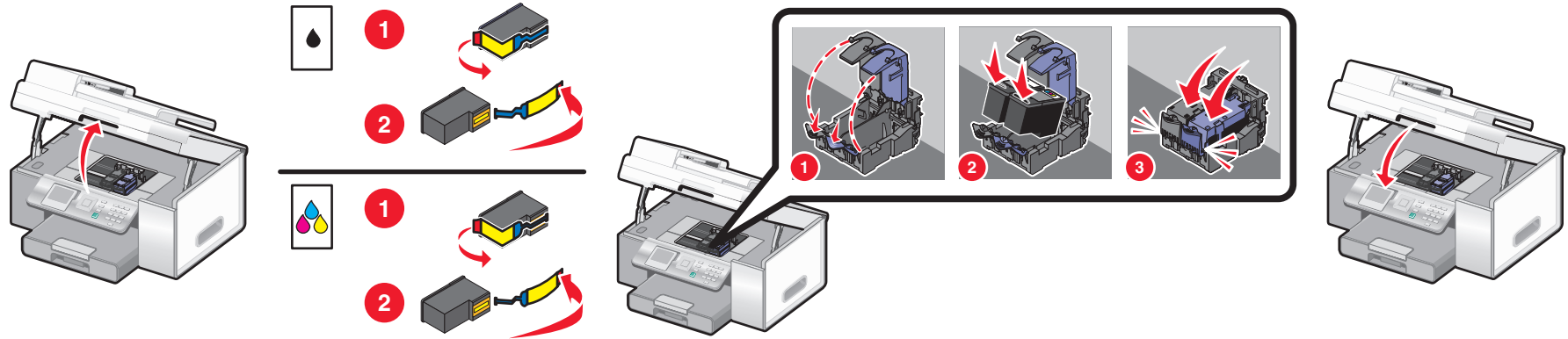
- 1 Press ◀ or ▶ to select the language.
- 2 Press ▼ to locate the Country setting.
- 3 Press ◀ or ▶ to select the country or region.
- 4 Press ▼ to scroll to **Set Date and Time**, and then press ✓.



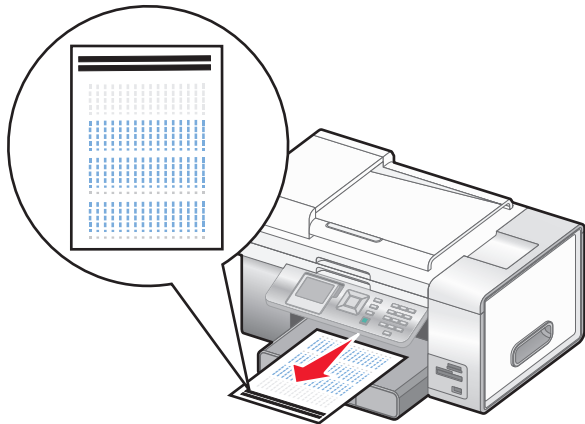
- 1 Use the keypad to enter the time, and use ◀ or ▶ to scroll between hours and minutes.
- 2 Press ◀ or ▶ to scroll to AM, PM, or 24Hr, and use ▲ or ▼ to change the setting.
- 3 Press ◀ or ▶ to scroll to **Current Date**.
- 4 Use the keypad to enter the date, and use ◀ or ▶ to scroll between day, month, and year.
- 5 Press ✓ to save the settings.



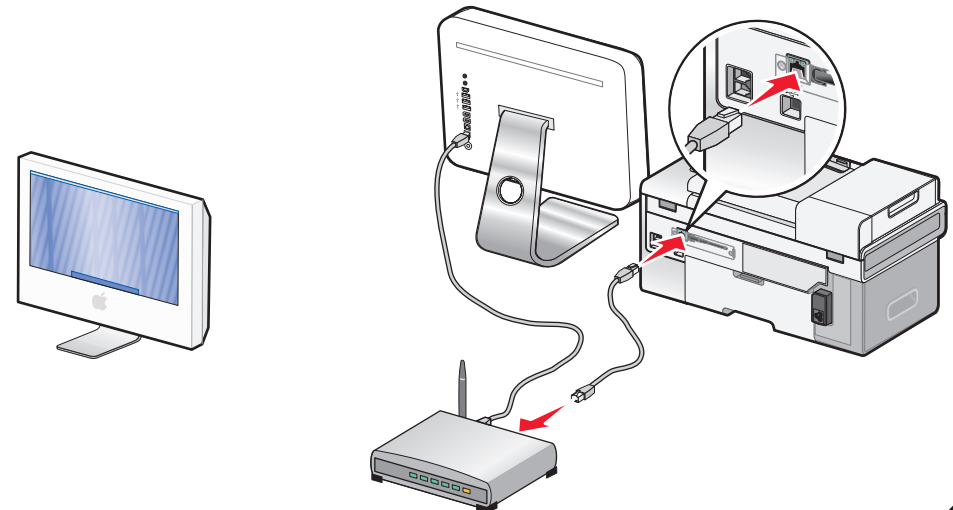
## 6 Insert the print cartridges.



## 7 The printer automatically aligns the print cartridges and prints an alignment page. This may take a few minutes.

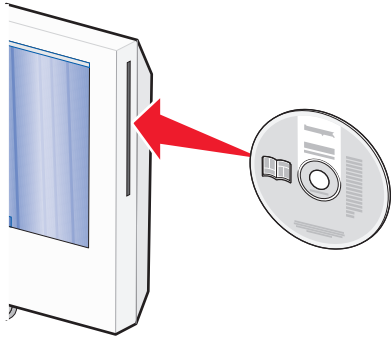


## 8 Make sure the computer is on, and then connect the network cable to the printer and to the router.





**9** Insert the CD.



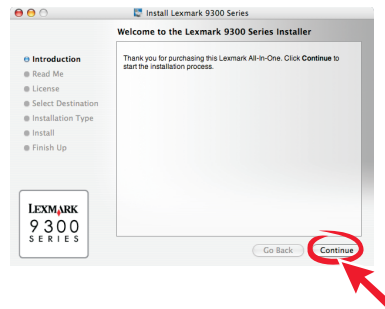
**10** Double-click the **9300 Series Installer** icon on the desktop.



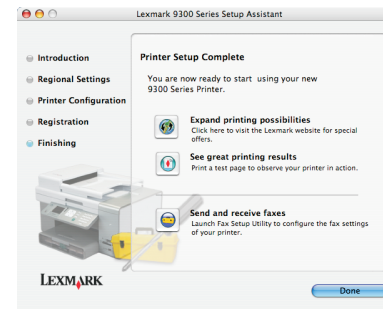
**11** Double-click the **Install** icon.


















**12** Click **Continue**.





**13** Follow the instructions on the screen to complete installation.



# Setup troubleshooting

<p>Incorrect language appears on the display.</p>	<ol style="list-style-type: none"> <li>1 Press  to turn the printer off.</li> <li>2 Press  once, and then immediately press and hold  and .</li> <li>3 Release the buttons.</li> <li>4 Press  or  repeatedly until the language you want appears on the display.</li> <li>5 Press  or  repeatedly until the option for Country is highlighted.</li> <li>6 Press  or  repeatedly until the country you want appears on the display.</li> <li>7 Press  or  repeatedly until <b>Set Date and Time</b> is highlighted.</li> <li>8 Press .</li> <li>9 Set the date and time. For more information, see step 5 in the Setup documentation.</li> </ol>
<p>Software does not install.</p>	<ol style="list-style-type: none"> <li>1 Turn off and then restart the computer.</li> <li>2 Insert the CD.</li> <li>3 Double-click the <b>9300 Series Installer</b> icon.</li> <li>4 Double-click the <b>Install</b> icon, and follow the instructions on the screen to complete installation.</li> </ol>
<p>Power button is not lit.</p>	<ol style="list-style-type: none"> <li>1 Disconnect the power cord from the wall outlet, and then from the printer.</li> <li>2 Plug the cord all the way into the power supply on the printer.</li> <li>3 Plug the cord into an electrical outlet that other electrical devices have been using.</li> <li>4 If the  light is not on, press .</li> </ol>

# Networking troubleshooting

<p>The printer does not appear in the list of printers found on your network</p>	<p>Make sure the printer has power and the  light is on. For more information see "Power button is not lit" in the Setup troubleshooting.</p> <ol style="list-style-type: none"> <li>1 Check the network cable for any obvious damage.</li> <li>2 Firmly plug one end of the network cable into the printer or the print server.</li> <li>3 Firmly plug the other end of the network cable into the network hub or wall connection.</li> </ol>
<p>The network printer does not print.</p>	<ol style="list-style-type: none"> <li>1 Check the network cable for any obvious damage.</li> <li>2 Firmly plug one end of the network cable into the printer or the print server.</li> <li>3 Firmly plug the other end of the network cable into the network hub or wall connection.</li> </ol> <p>Make sure the printer has power and the  light is on. For more information see "Power button is not lit" in the Setup troubleshooting.</p> <p>Make sure the network is operating properly.</p>
<p>Printer does not appear on the Printer Selection screen.</p>	<ol style="list-style-type: none"> <li>1 From the Printer Selection screen, select <b>Add Remote</b> from the pop-up menu.</li> <li>2 From the Add Remote pane, enter a TCP/IP address to find printers on the network. For more information, see the Help.</li> </ol>

